

MyLab™ FOX

Dive Into Versatility



esate VET
HEALTH WITH CARE

MyLab™FOX



PRODUCTIVITY

MyLab™FOX speeds up your daily routine with an intuitive interface and powerful engine to make your workload smoother.



DIAGNOSTIC CONFIDENCE

Quick and accurate results for precise and reliable diagnosis: smart technology that is always available when you need it.



SMART AND COMPLETE

MyLab™FOX is a multidisciplinary solution that meets all clinical demands: the valuable choice for your practice.



DESIGNED FOR VETERINARIANS

Efficient workflow designed around your busy schedule.



BATTERY SUPPORT*

Fast boot and more than one hour of full performance scanning with the system unplugged.

*optional

Dive Into Versatility

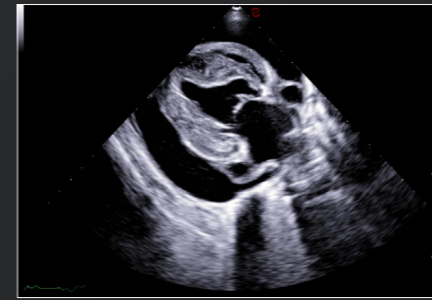
Clever, fast, and intelligent by nature, the fox is a resourceful animal that can adapt well to various environments. With the same features, the MyLab™FOX is a multidisciplinary and adaptable scanning partner for all your diagnostic needs. For decades, at Esaote, we have been collaborating with veterinarians to develop systems that meet clinical demands and improve the day-to-day clinic workflow, with a clear-cut focus on animal care and productivity. Thanks to the latest technological advancements and a fast and intuitive workflow, MyLab™FOX optimizes diagnostic confidence in any ultrasound examination, in a wide range of applications for all types of animals.

MyLab™FOX

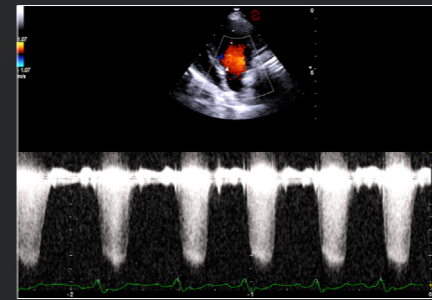


Precision in Every Pulse

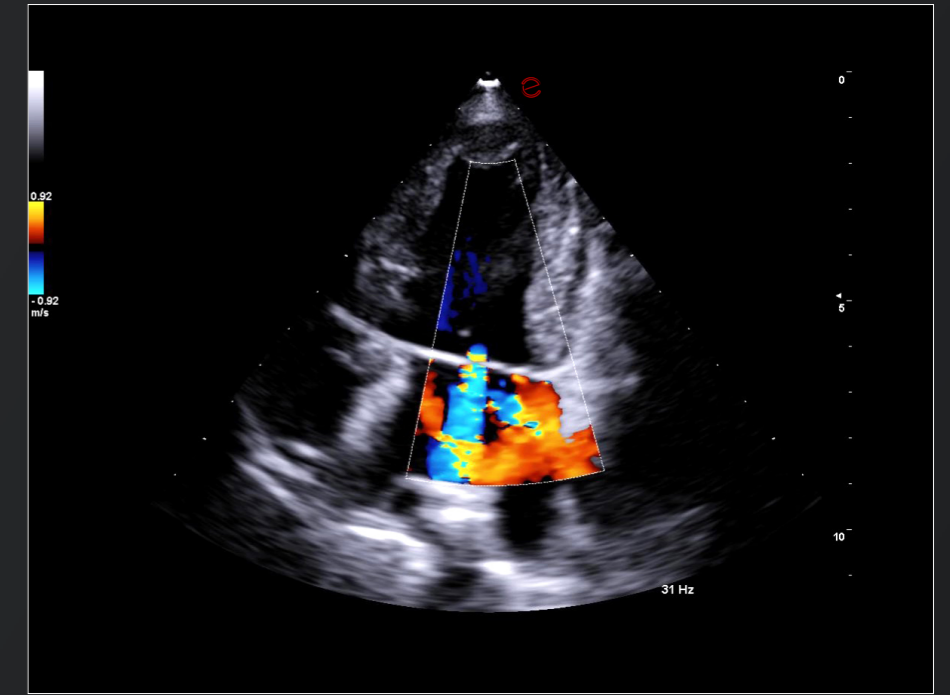
As the first element of the image chain, probes technology directly impacts the level of image quality, and consequently diagnostic accuracy. With MyLab™FOX, we introduce a new generation of probes to cover all clinical applications and deliver you precise information through detailed imaging.



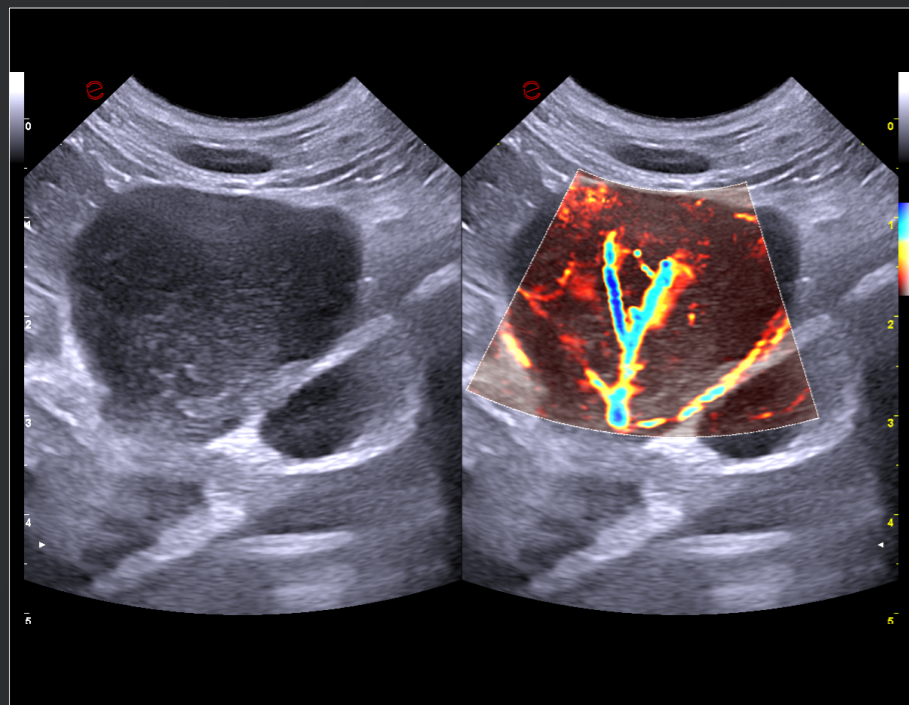
Cardiac tamponade



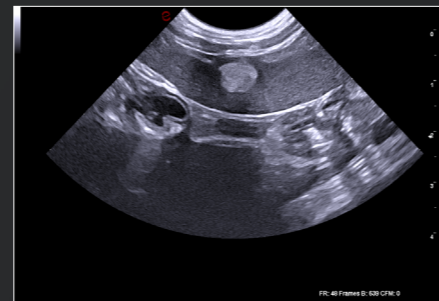
Mitral valve flow with CW



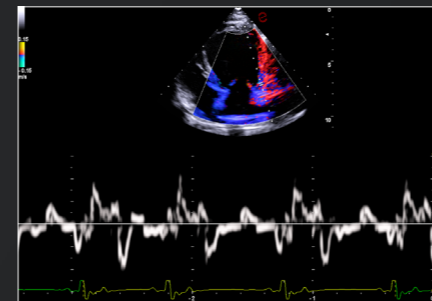
Mitral valve regurgitation flow



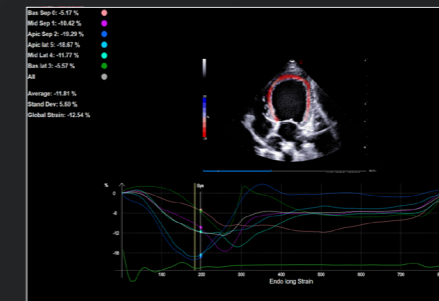
Aberrant vascularization of a lymph node in a dog affected by lymphoma



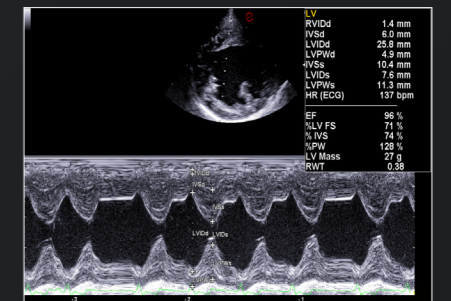
Spleen focal lesion



Heart wall motion study with TVM



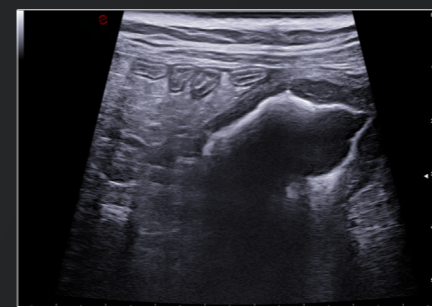
Left ventricle wall motion study XStrain



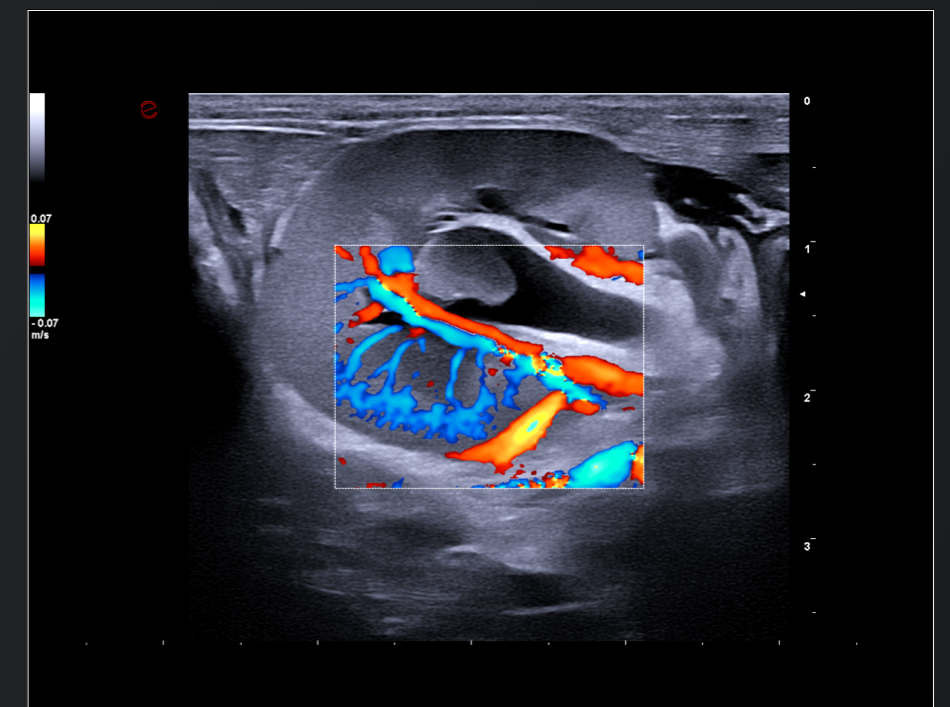
Left ventricle dimension, short axis view, papillary muscles level



Intestinal wall thickness



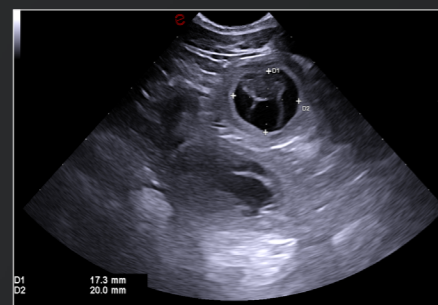
Encrusted cystitis



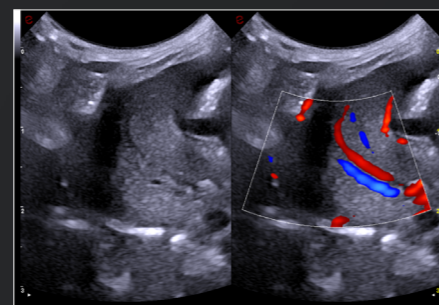
Kidney vascularization



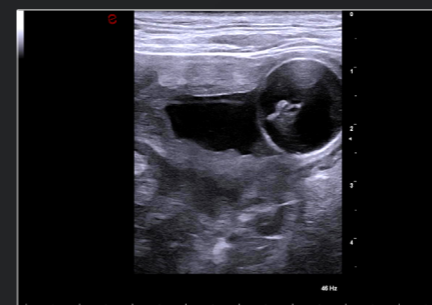
Liver cysts



Dog pregnancy



Parenchymatous organ vascularization



Urinary bladder catheterization

Boosted Workflow

QUICK AND FAST EXAM

You can start the exam with only one click with a fast probe selection and optimized veterinary presets.

AUGMENTED INSIGHT™

Your diagnostic efficiency is accelerated by Advanced Zero-Click automation tools, powered by Artificial Intelligence.

FLEXIBLE REPORT

You can easily customize measurements and annotations and automatically add them to your reports.

EASY MODE & EASY COLOR

You can fine tune multiple parameters quickly and efficiently with a unique tool for real-time image optimization.

MYLIBRARY VET

You can scan in real-time having direct access to imaging guidance combined by live preview and anatomical references in the same interface.

EASY FOLLOW-UP

You can easily compare multiple exams acquired with a different modality using the Multimodality & Follow Up, a simple tool to reach a faster diagnosis.

Adaptable by Design

With its robust design, the MyLab™FOX lets you choose between the standard control panel or the completely cleanable one, providing an exceptional experience in any clinical environment.



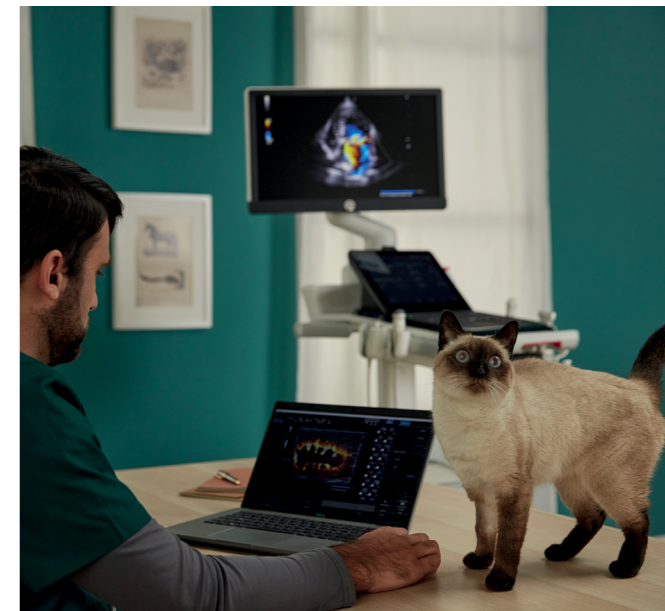
Connected. Anywhere. Anytime.

MyLab™Desk VET

MyLab™Desk VET's extensive reporting features offer you the flexibility to manage and review examinations on a laptop from anywhere at any time.

MyLab™Share

Sharing images and clips is now quick and simple with MyLab™Share, enabling you to have remote collaboration, education, and training.



Committed to Education

For four decades, our unwavering dedication to customer care and veterinary imaging have been our top priorities and greatest strengths. The evolution of our extensive fleet of ultrasound scanning systems shows our steadfast commitment to enriching the diagnostic learning experience.

- ✓ Immerse yourself in comprehensive knowledge training, delivered both in person and remotely.
- ✓ Rely on the efficacy of our remote and in-person technical support.
- ✓ Experience the journey of solid clinical training, available in various formats, including the live or on-demand VET e-Academy webinars, the "Meet the Expert" series and newsletter featuring real clinical cases, the in-person events that showcase the expertise of both local and international speakers.

At Esaote, we believe that education and learning are the cornerstones that offer you and your colleagues value. We are always looking for ways to improve and deliver an unmatched educational experience and continually reset the bar by redefining the next evolution in veterinary ultrasound imaging.



esaote VET

160000487MA Ver.02



Esaote S.p.A. - sole-shareholder company

Via Enrico Melen 77, 16152 Genova, ITALY, Tel. +39 010 6547 1, Fax +39 010 6547 275,
info@esaote.com - www.esaote.com

MyLab™ is a trademark of Esaote s.p.a. Technology and features are system/configuration dependent. Specifications are subject to change without notice. Information might refer to products or modalities not yet approved in all countries. Product images are for illustrative purposes only. For further details, please contact your Esaote sales representative.

Please visit us online
for more information



Italian design