

MyLab™ OMEGA eXP VET

Animal Care, Anytime, Anywhere



Preliminary

MyLab™ OMEGA eXP_{VET}

Animal Care, Anytime, Anywhere

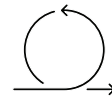
Experience agility in veterinary care with Esaote's newest portable ultrasound system, the **MyLab™Omega eXP VET**.

Developed for unparalleled robustness, accuracy, and lightning-fast performance, the **MyLab™Omega eXP VET** is engineered with proprietary **VET workflow** technology designed to accelerate the image acquisition and the diagnostic process, offering a new level of flexibility and precision for a confident diagnosis on the go.



XCRYSTAL TECHNOLOGY

XCrystal array technology provides precision imaging covering superficial to deep tissue scanning without compromise.



AGILE AND FLEXIBLE

Various configurations for diverse environmental settings ensure that all clinical needs are met.



VET DEDICATED SW AND PROBES

The dedicated software and probes facilitate a smart and precise workflow for an efficient routine.



LONG-LASTING BATTERY

2 hours of operating time plus extra battery option with more than 240 minutes of autonomy, allowing peace of mind during the exams.



Superior Efficiency

Whether you are looking for an ultrasound system for your private small clinic or for a hospital, or if you are a freelancer or a specialist working in a modern veterinary center, MyLab™Omega eXP VET and its versatility is suited to any environment and meets all clinical needs.

Whether you are scanning dogs or cats, horses or cows, pets or unconventional animals, MyLab™Omega eXP VET provides you with superior ultrasound quality.

MyLab™Omega eXP VET becomes your crucial partner for daily animal care, anytime, anywhere.



Rely on durability and longevity

The innovative design, extremely agile and robust, is designed to perform in any environment.

Streamline the exam through automation

Advanced Zero-Click automation tools, powered by Artificial Intelligence, accelerate the routine improving usability and diagnostic efficiency.

Adjust images on the fly

AutoAdjust automatically and immediately sets the optimal image setting with only "One-Touch".

Do more in less time

The new High-Performance PC provides speed, responsiveness and reliability.

Change quickly without wasting time

2 probe connectors on-board (up to 4) increase convenience and performance during the exam.

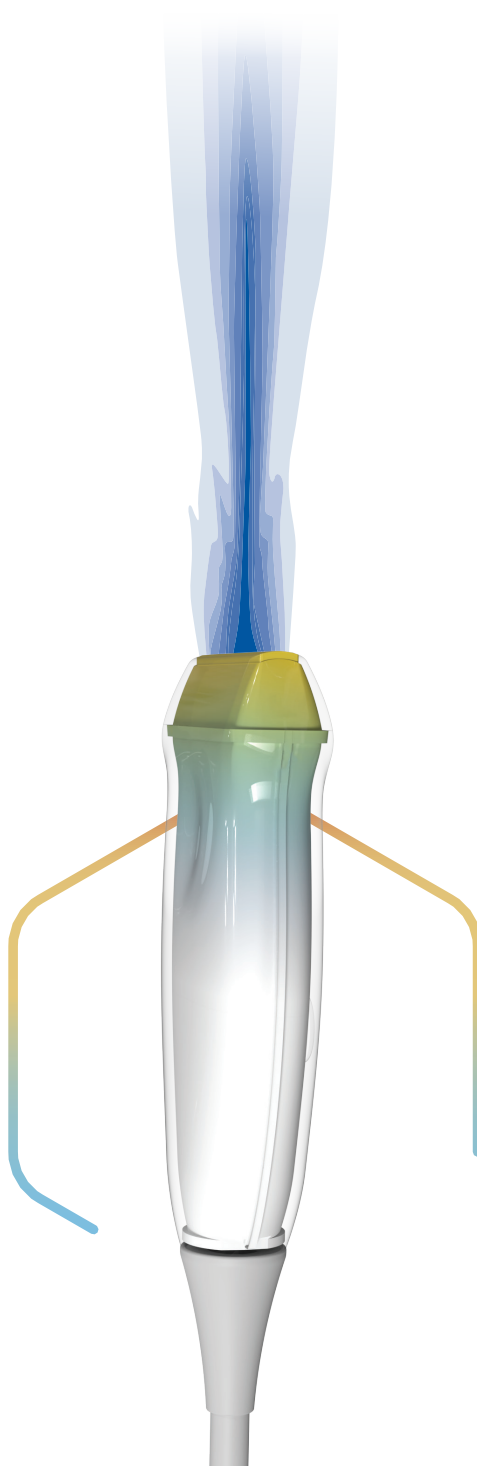
Report quickly and confidently

The VET dedicated report and follow-up guide come with an exam comparison feature tool to assess all data needed to determine an accurate diagnosis.

XCrystal Technology, Imaging Performance

As a benchmark in high-performance probe manufacturing, Esaote developed XCrystal Technology that increases **sensitivity and penetration** to deliver **sharper images and homogeneity** in patients of all sizes.

Covering all animals species, MyLab™Omega eXP VET and the comprehensive probe selection ensure great performance, allowing you to achieve excellence in any application.



XCrystal Technology

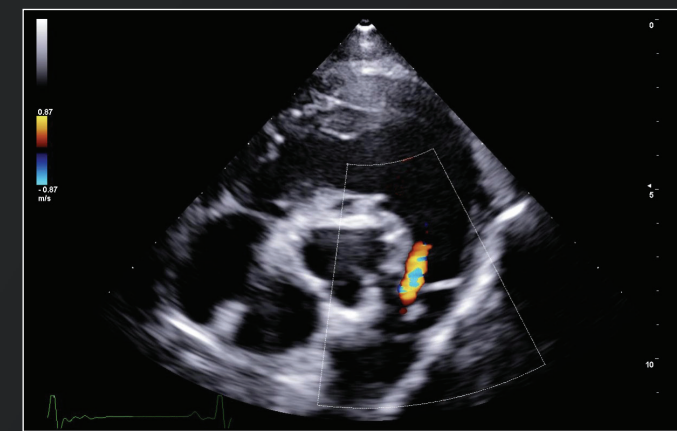
Lens **shape**

Thermal drain mechanism

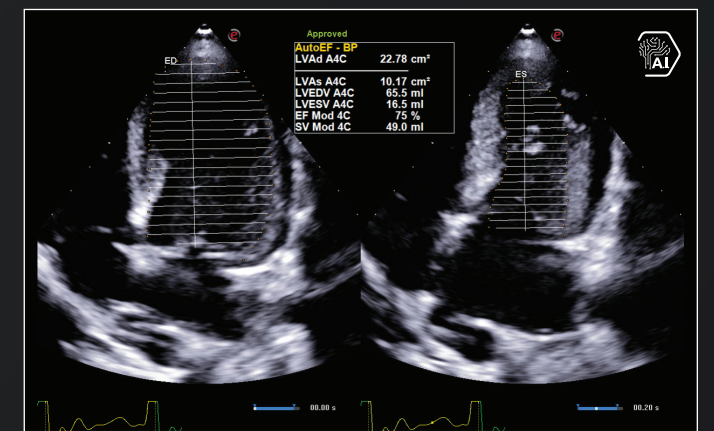
HD elements/multi-layer **matrix structure**

Echocardio Powered by Augmented Insight™

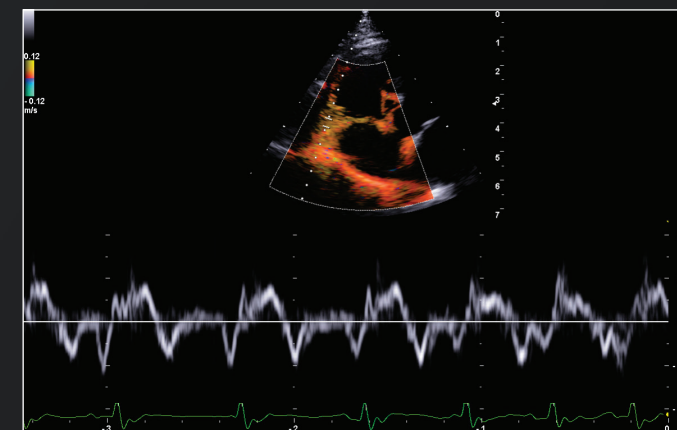
MyLab™Omega eXP VET benefits from Esaote Augmented Insight™ to empower the workflow with dedicated tools and automatic measurements driven by Artificial Intelligence, drastically increasing the fluidity in your daily routine experience.



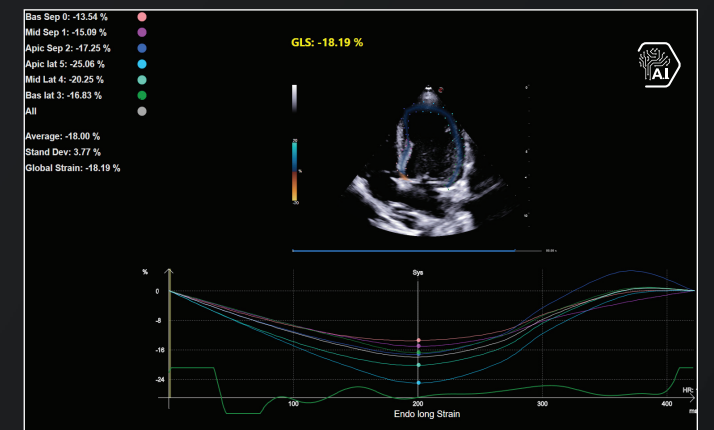
CFM - HFR (High Frame Rate) temporal and spatial resolution to reach optimal flow fluidity and regurgitation visualization



AutoEF - Automatic anatomical view recognition and endocardial border detection, speeding up Ejection Fraction (EF) measurements



TVM and TDI - complete Wall Motion Analysis to evaluate systolic and diastolic myocardial functions

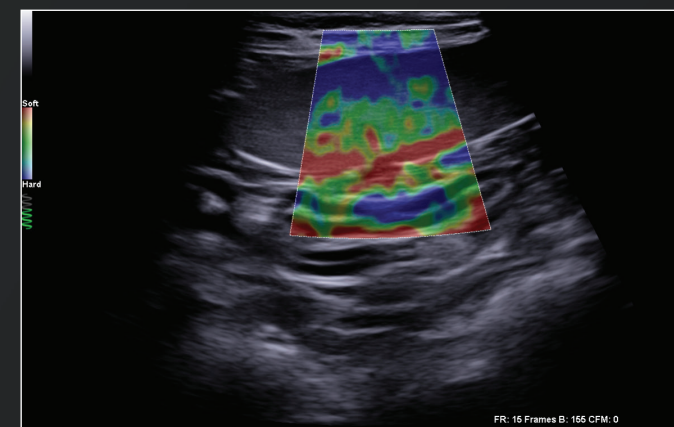


XStrain™ - speckle-tracking to get an immediate quantification of the Global Longitudinal Strain (GLS) and the Bull's eye representation

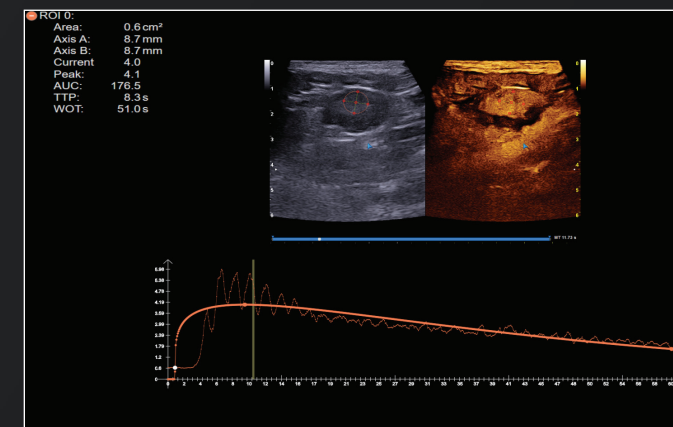
Exploring the Inside

A new powered imaging system, combined with a dedicated real-time speckle reduction algorithm, ensures a high diagnostic capability that enhance the veterinarian's daily routine by providing an ultra-clear, detailed and instant image in all veterinary applications.

The advanced on-board tools help you diagnose quickly and accurately for timely and effective patient care.



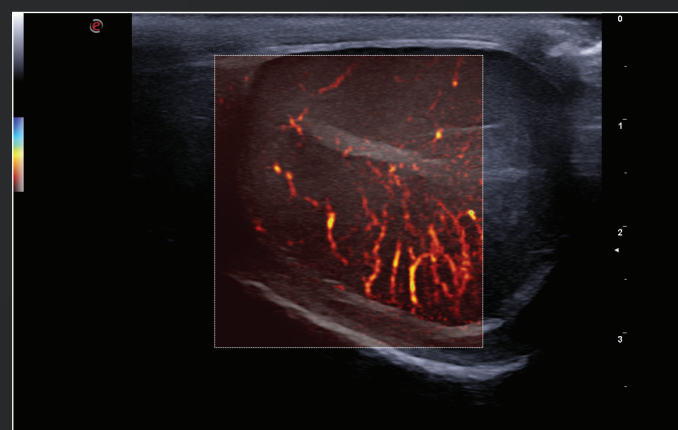
ElaXto - tissue elasticity assessment of qualitative stiffness representation available at a glance



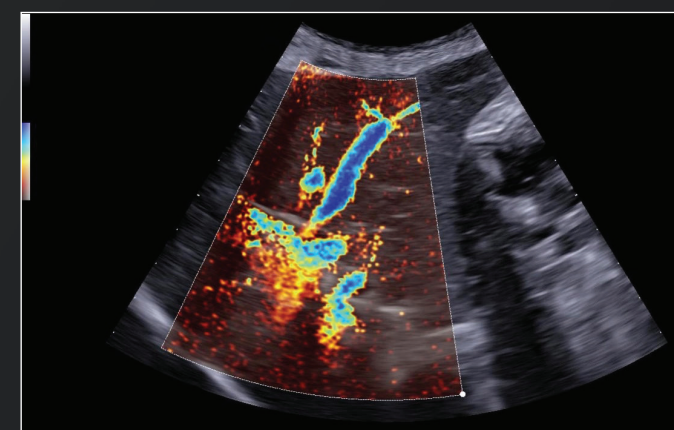
CnTI™ and QPack - CEUS to study and directly quantify wash-in and wash-out phases



XView+ and MView - advanced image processing to acquire immediate, highly detailed imaging with minimal effort



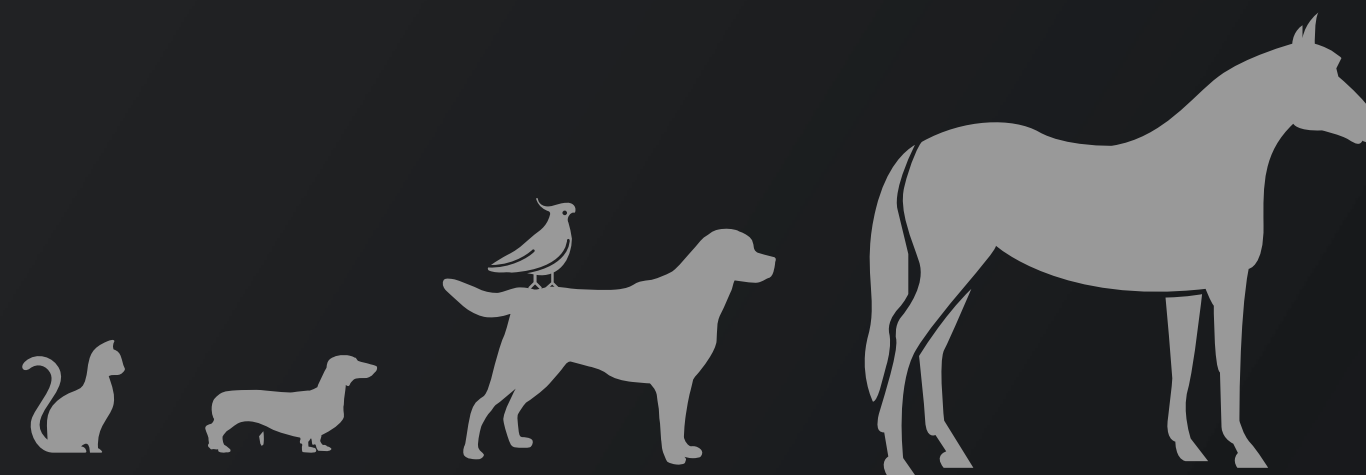
High-freq probes - unparalleled level of detailed imaging to strengthen the diagnosis



microV - outstanding visualization of the vascularization to study even the smallest flows



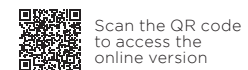
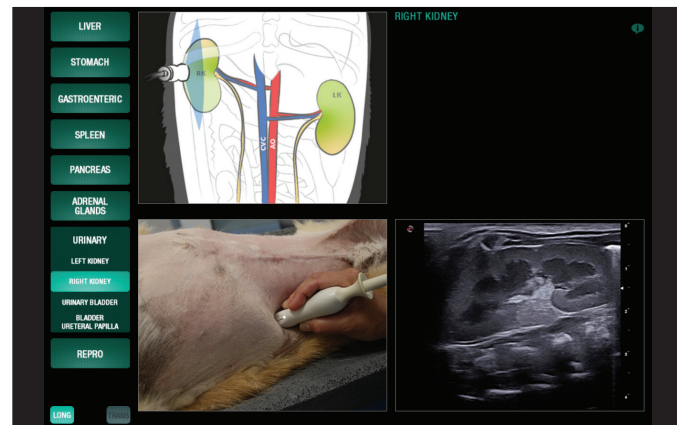
Needle Enhancement - increased needle visibility to immediately reach the target while maintaining top image quality



On-board Examination Support

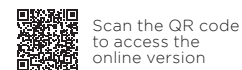
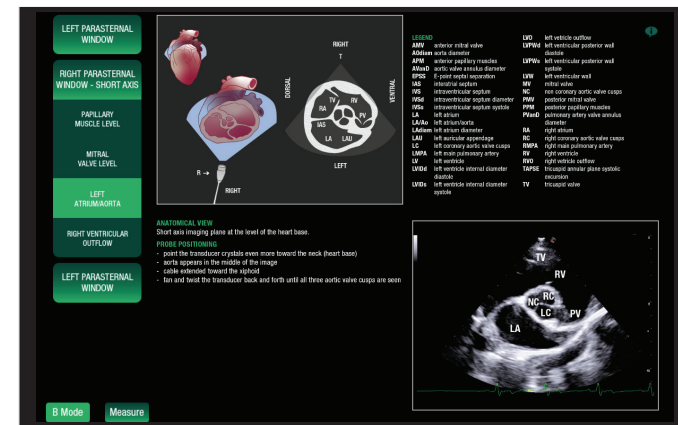
MyLibrary VET: live preview to scan in real-time while using anatomical references and scanning guidance.

Dog Abdomen



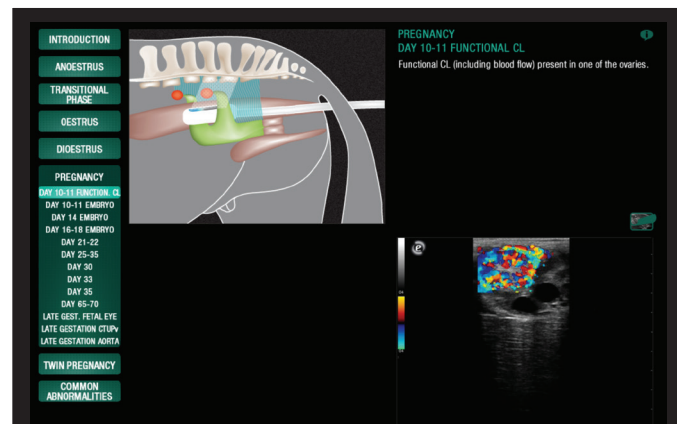
Scan the QR code to access the online version

Dog Cardio

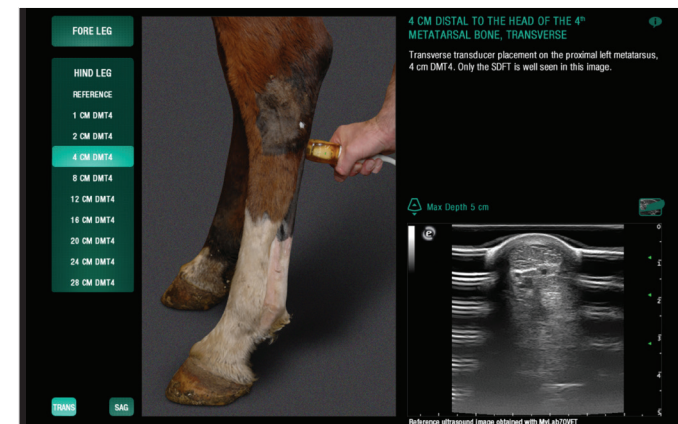


Scan the QR code to access the online version

Equine Repro

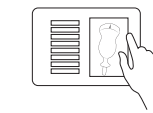


Equine Tendon



Exceptional User Experience

Efficiency and precision are the keys to success in fast-paced and dynamic environments. Say goodbye to time-consuming processes and embrace a streamlined workflow that saves you precious time and energy.



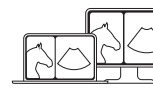
Easy and quick exam

By quickly selecting probes, species, applications and optimized veterinary presets, the user can start the exam with a single click.



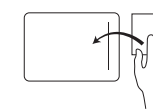
Streamlined workflow

The high-capacitive, reactive, and glove-compatible touch screen enhances the user experience with an intuitive workflow and interface.



Advanced and intelligent workstation

With MyLab™Desk VET and its comprehensive reporting capabilities, users can review and manage exams on a laptop wherever they are, anytime and anywhere.



Customizable report

Entire measurement packages, annotations, and body marks can be changed and automatically added to reports as needed.



Import and export exams in multimodality

Several formats, including DICOM, native or multimedia, are available to import and export exams through network or USB mass storage.



Real-time examination sharing

With MyLab™Share and by connecting the eStreaming tool, sharing examinations is fast and easy, enhancing remote team cooperation, education, and training.



esaote VET

Preliminary

160000448MA Ver.01



Esaote S.p.A. - sole-shareholder company

Via Enrico Melen 77, 16152 Genova, ITALY, Tel. +39 010 6547 1, Fax +39 010 6547 275,
info@esaote.com - www.esaote.com

MyLab™ is a trademark of Esaote S.p.A. Technology and features are system/configuration dependent. Specifications are subject to change without notice. Information might refer to products or modalities not yet approved in all countries. Product images are for illustrative purposes only. For further details, please contact your Esaote sales representative.

Please visit us online
for more information

