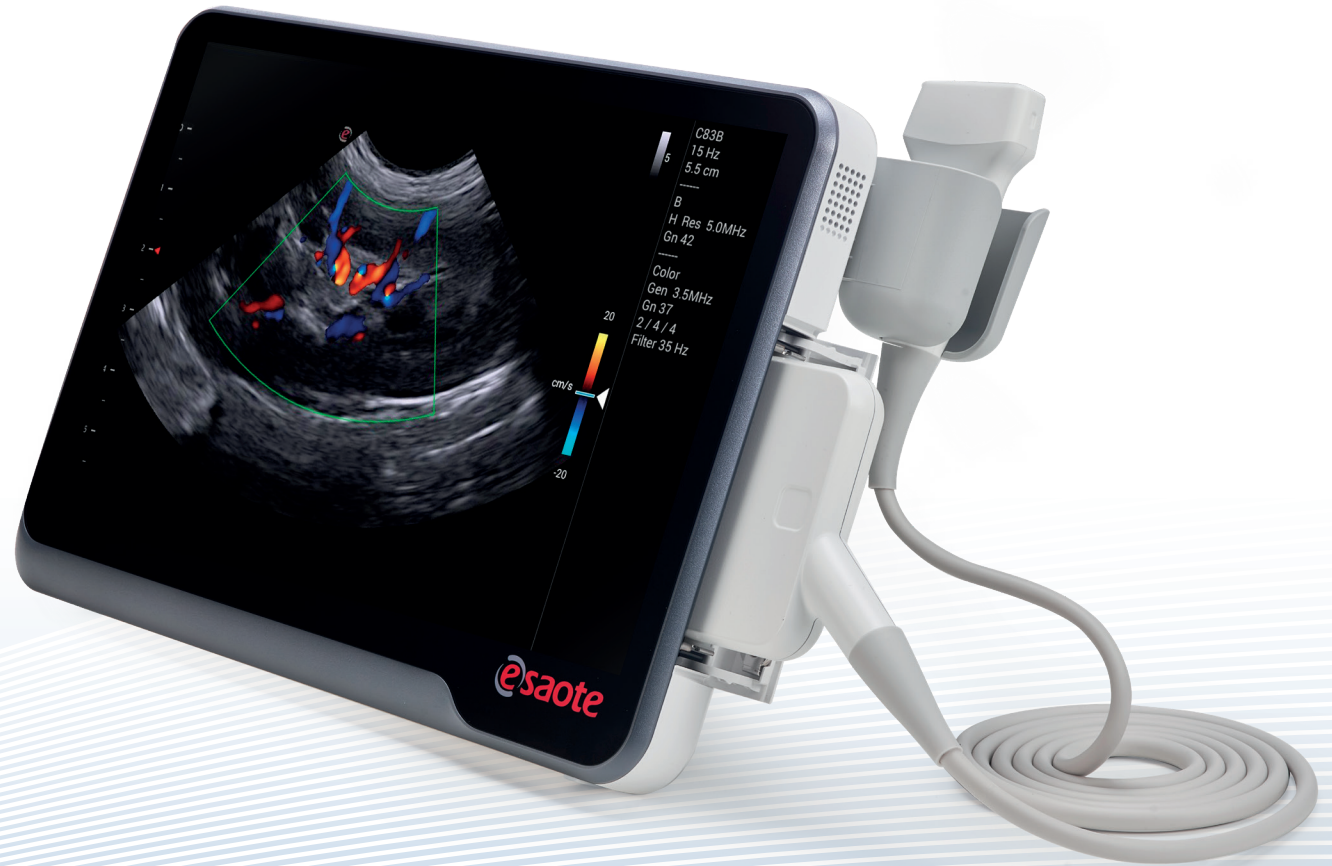


MyLab™ X1 VET

One way to scan

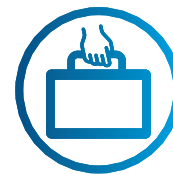


NEVER STOP ELEVATING YOUR VET EXPERIENCE.

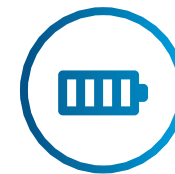
esaote

Wherever you go, whatever you need.

With **MyLab™X1VET**, designed for freelancers, farm animal Vets, emergency rooms and hospital settings, smart diagnosis is now possible.



Ultraportable and Easy-to-carry



Long-lasting battery



Gesture-driven touchscreen



Wide connectivity options



Fast reaction times



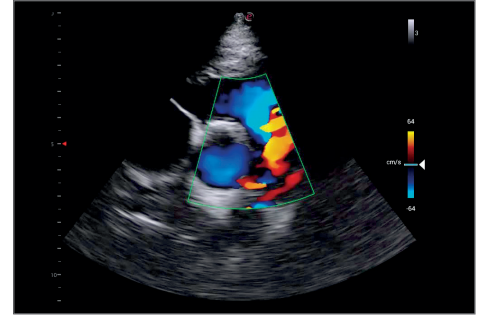
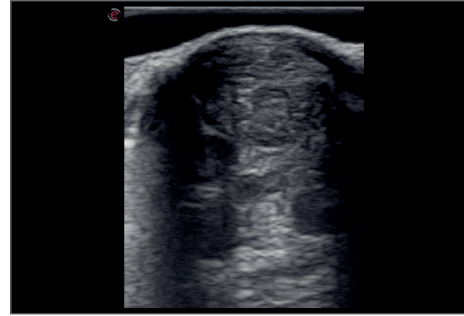
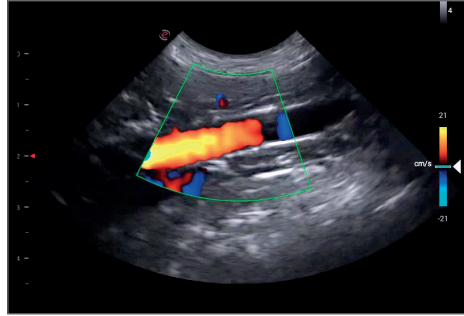
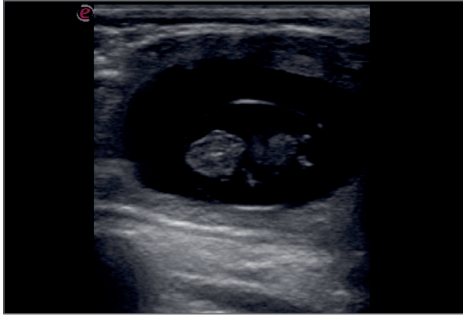
Easy-to-clean



VET dedicated software – Advanced measurements



Eco-Friendly and sustainable



An ideal solution for **every clinical application**



NEVER STOP ELEVATING

YOUR VET EXPERIENCE.


www.esaote.com

 Qisda Corporation
No.157, Shan-Ying Road, Shan-Ting Li, Gueishan Dist., Taoyuan City, Taiwan



Distributed by Esaote S.p.A – sole-shareholder company
Via Enrico Melen 77, 16152 Genova, ITALY, Tel. +39 010 6547 1, Fax +39 010 6547 275, info@esaote.com

MyLab is a trademark of Esaote spa.

Technology and features are system/configuration dependent. Specifications subject to change without notice. Information might refer to products or modalities not yet approved in all countries. Product images are for illustrative purposes only.
For further details, please contact your Esaote sales representative.



Please visit us online
for more information