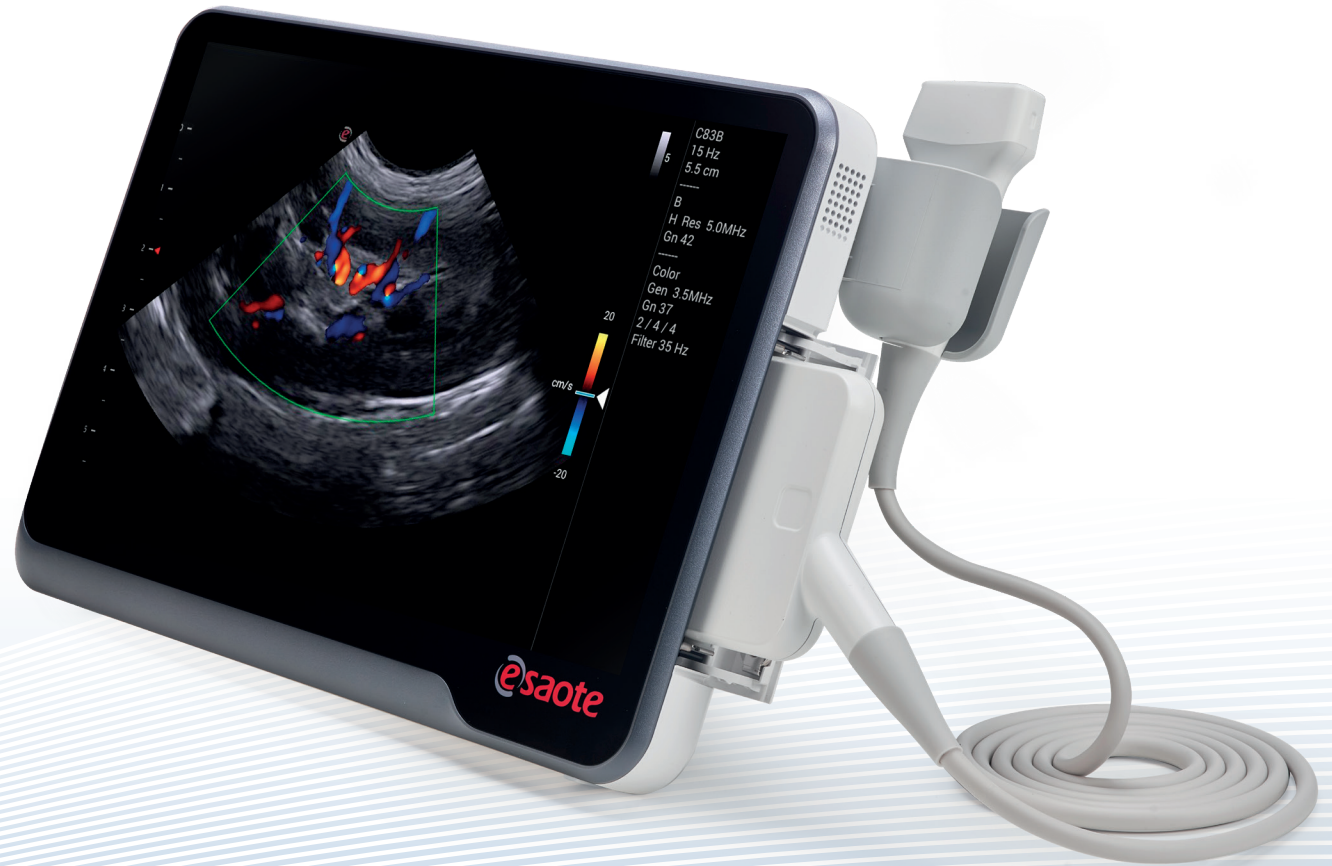


MyLab™ X1 VET

One way to scan



NEVER STOP ELEVATING YOUR VET EXPERIENCE.

esaote

Dovunque tu vada, in qualsiasi situazione

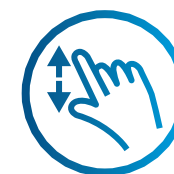
Con MyLab™X1VET, progettato per liberi professionisti, veterinari di animali da allevamento, pronto soccorso e ambienti ospedalieri, la diagnosi intelligente ora è possibile.



Ultraportatile e facile da trasportare



Batteria a lunga durata



Touchscreen basato sui gesti



Ampie opzioni di connettività



Tempi di reazione rapidi



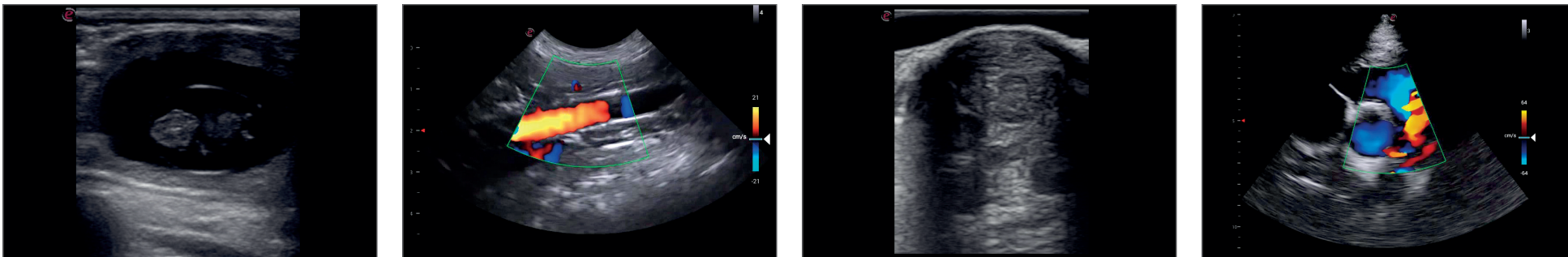
Facile da pulire



Software dedicato VET - Misurazioni avanzate



Ecologico e sostenibile



Una soluzione ideale per ogni applicazione clinica



NEVER STOP ELEVATING

YOUR VET EXPERIENCE.



CE Qisda Corporation
No.157, Shan-Ying Road, Shan-Ting Li, Gueishan Dist., Taoyuan City, Taiwan



Distributed by Esaote S.p.A – sole-shareholder company
Via Enrico Melen 77, 16152 Genova, ITALY, Tel. +39 010 6547 1, Fax +39 010 6547 275, info@esaote.com

MyLab is a trademark of Esaote spa.

Technology and features are system/configuration dependent. Specifications subject to change without notice. Information might refer to products or modalities not yet approved in all countries. Product images are for illustrative purposes only. For further details, please contact your Esaote sales representative.



Please visit us online
for more information