

MyLab™ X90 VET

Empowering Veterinary Care



NEVER STOP ELEVATING YOUR VET EXPERIENCE.

esaote
veterinary

Experience Excellence in Ultrasound

A simple detail can **make the difference** in treating your patients. With MyLab™X90VET, its premium ultrasound system, Esaote is committed now more than ever to providing you with the **ultimate technologies**, and to delivering outstanding image quality and **advanced clinical solutions**.

Bridging the clinical information and an **A.I.-driven workflow** for the first time, MyLab™X90VET will be your first experience of an ultrasound device with Intelligent Imaging.



discover more on
MyLab™X90VET
technologies and
architecture



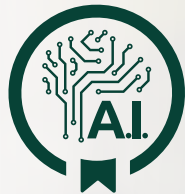
ULTIMATE
DESIGN



XCRYSTAL
TECHNOLOGY



VET DEDICATED
SW AND PROBES



AUGMENTED
INSIGHT™



CLINICAL
EXPERIENCE

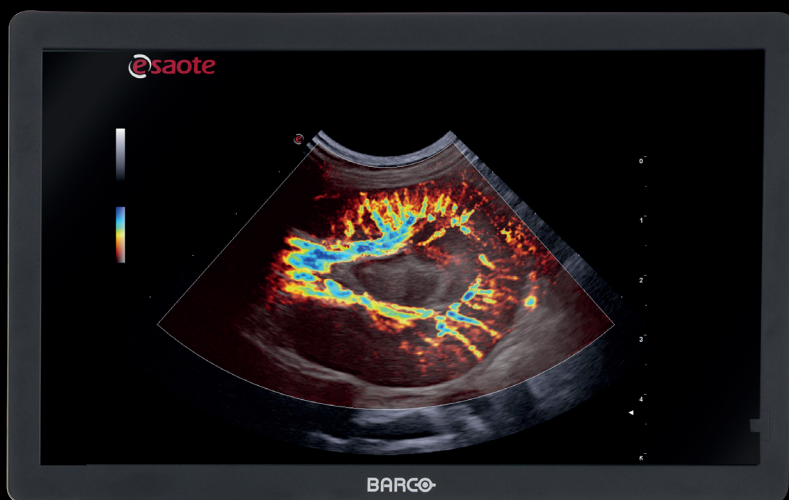


@Led monitor

Top-class medical imaging visualization

Collaborating with **Barco** to equip an exclusive @Led monitor.

- 23.8" Full HD High Dynamic Range Monitor
- Dual-Layer technology
- Contrast resolution ratio × 40*
- Higher sensitivity in brightness and color
- Long lifespan and stability



*compared to conventional LCD technology

High-tech design, maximum comfort

Optimal working environment

- Exclusive **light sensor** for automatic optimization of brightness to the scanning environment.
- **Opti-Light** feature for real-time lighting, providing invaluable comfort in everyday use, according to the light conditions in the room.



New workflow gestures

Intuitive real-time control of several parameters such as **depth, zoom, sample gate, replay of cineloop** or even certain measurements using only your fingers.



Customizable workstation

The **high-quality articulating arm** and its friction mechanism offer the option of lifting the monitor easily and keeping it in the optimum position chosen, for scanning either standing up or sitting down.

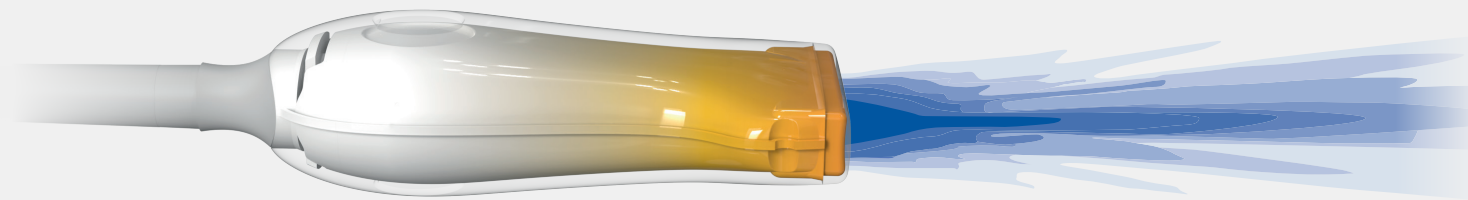


XCrystal Technology, micro-slice imaging

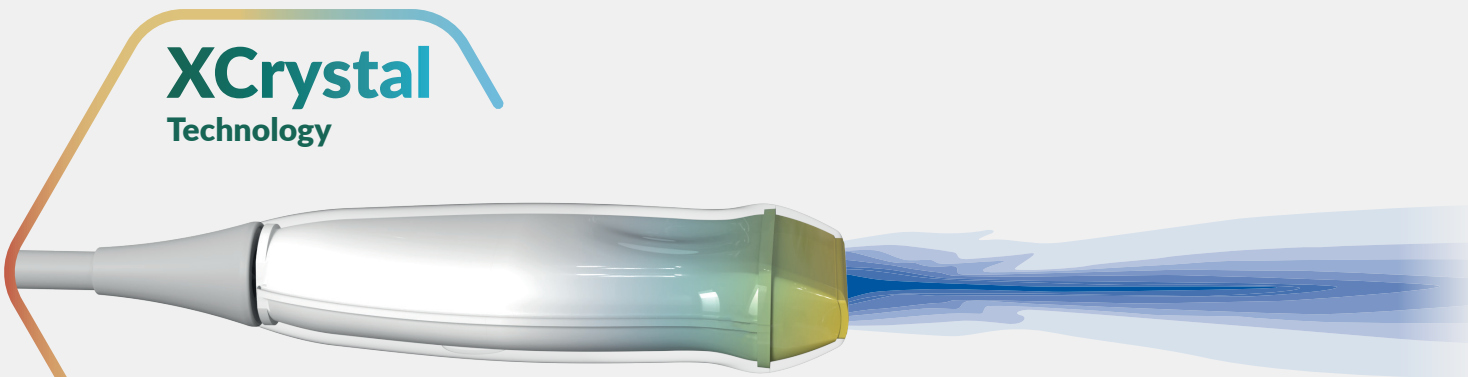
Esaote-developed **XCrystal technology** dramatically increases **sensitivity** and **penetration**, to provide sharper images and **homogeneity**.

As a historic specialist in high-frequency probe manufacturing, Esaote offers a broad portfolio of transducers to cover all clinical needs and patient sizes, giving an **unparalleled level** of detail imaging.

The **LMX 4-20**, Esaote's brand-new **HD Single Crystal probe**, combined with ClearWave Architecture, benefits of very wide bandwidth and operating frequencies up to 25 MHz. It reveals unprecedented clarity in the minutest details with no compromise in the deeper area.

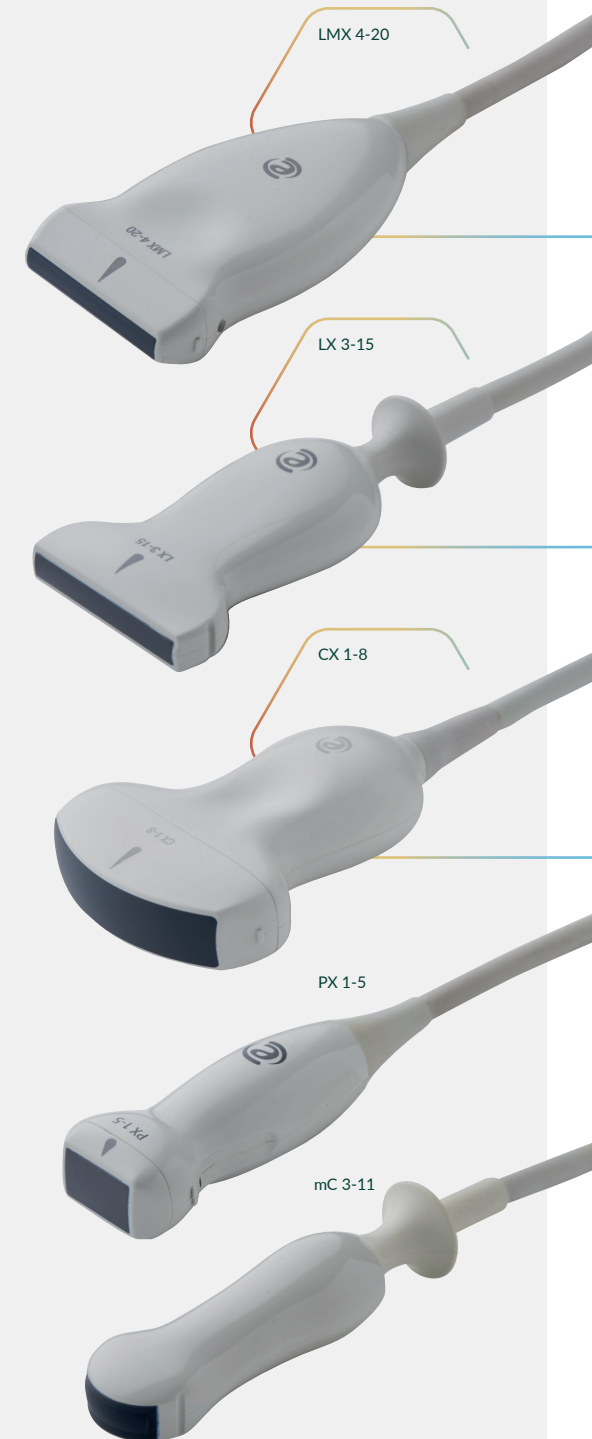


Conventional probe technology



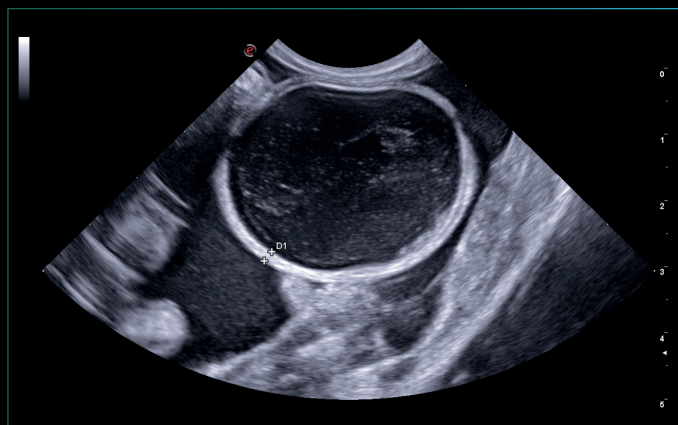
XCrystal
Technology

Lens shape
Thermal drain mechanism
HD elements/multi-layer matrix structure

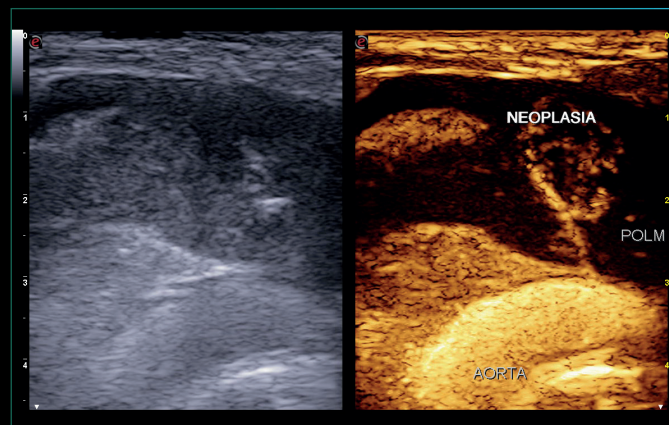


Superb quality and impressive performance

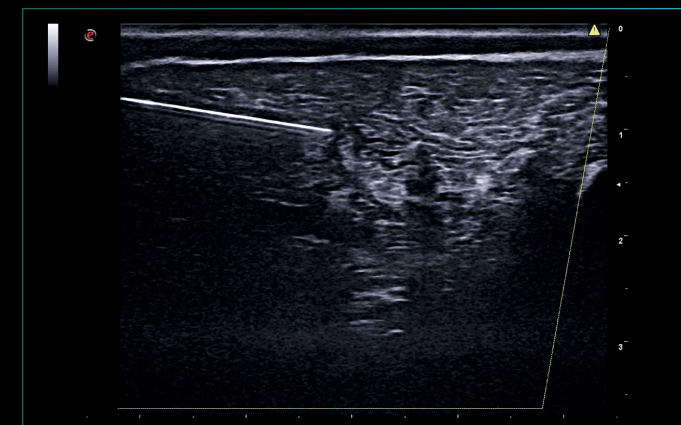
To leverage the imaging experience, Esaote supports homogeneous first-class-quality images through a wide selection of probes, enhancing details with sharpness and clarity in all species.



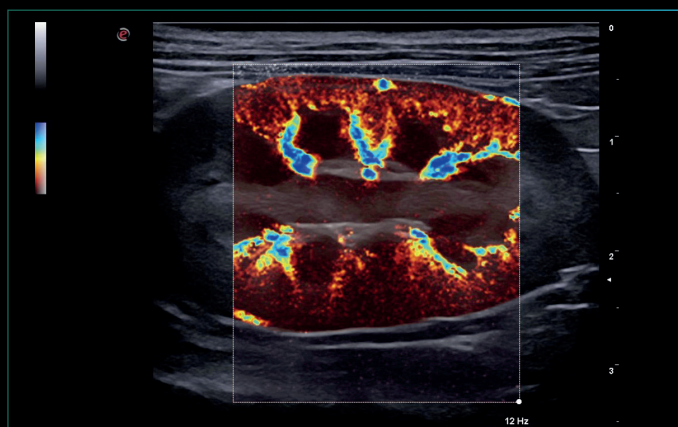
XView Clear – gives a superior ultrasound imaging quality that exponentially increases diagnostic confidence and image readability.



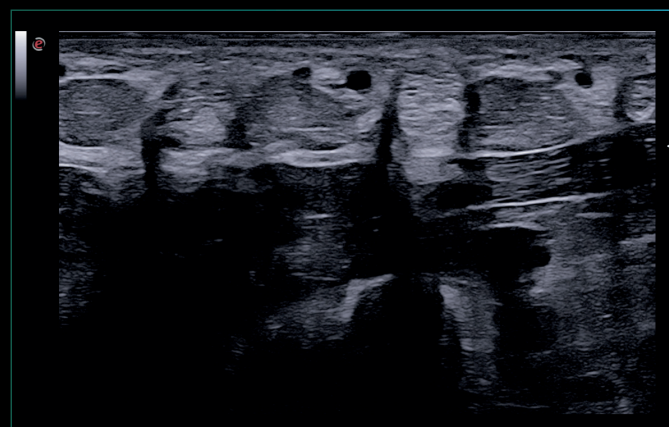
CnTI™ Clear – increases performance via considerable persistency with information for tissue microperfusion.



Needle @nhancement – increases needle brightness, ameliorating the accuracy of the intervention procedure.



microV – provides an outstanding visualization of the lowest flows with high frame rate and enhanced sensitivity.



High Freq single crystal – reveals unprecedented clarity in the minutest details without compromising the deeper areas.



QElaXto 2D – automatically summarizes real-time stiffness quantification in a report, to support diagnosis and easy follow-up.



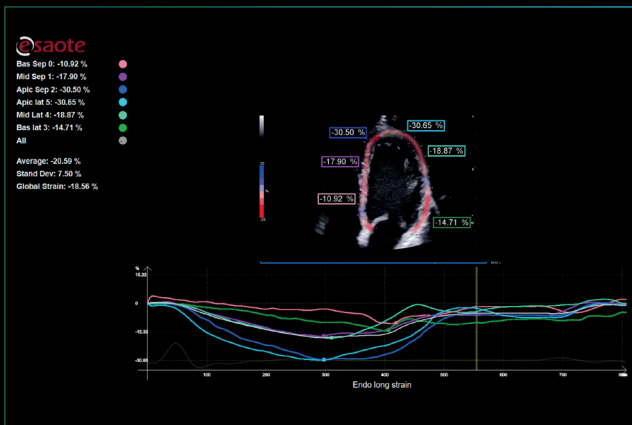
Augmented Insight™



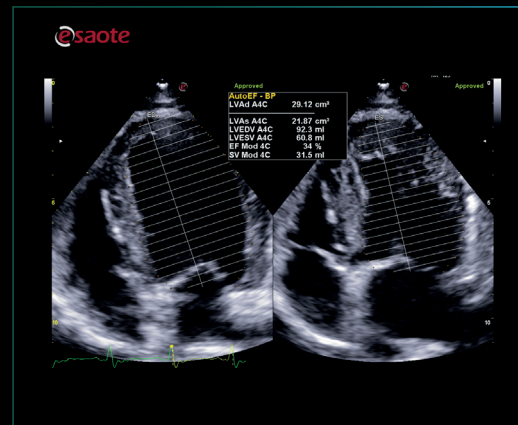
Based on data-driven machine learning, Augmented Insight™ is designed to simplify the workflow in repetitive gestures and complex procedures.

MyLab™X90VET covers a 360° shared-service solution, embedding new workflow powered by A.I. in cardio applications to increase speed and accuracy in standard measurements.

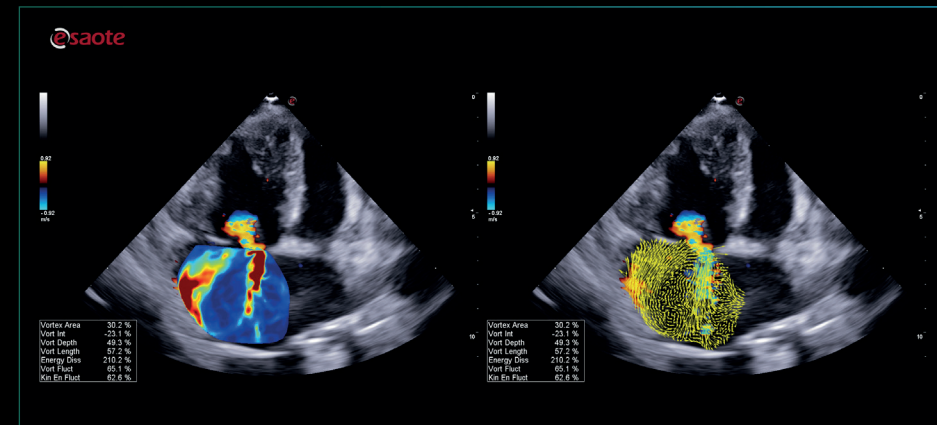
A full package of zero-click tools is included, to facilitate the quantification of cardiac function, such as **AutoEF**, **XStrain™** and **HyperDoppler**.



XStrain™ – enables zero-click detection of the endocardial border profiles in the left ventricle and provides strain assessment of the right ventricle.



AutoEF – offers an automatic A.I.-driven contouring of the left ventricle in 4 and 2 chambers, to assess the ejection fraction.



HyperDoppler – allows to investigate intracardial flows for research purposes.

Versatile connectivity

Supported by a powerful architecture and high-tech components, MyLab™X90VET embraces the new trends in term of medical data streams with a complete offer of connectivity tools, such as **MyLab™Tablet**, **MyLabRemote** and **MyLab™Desk**.

Either for education purposes or collaborative examinations, **@Streaming** technology offers real-time streaming of ultrasound, together with picture-in-picture camera on your tablet, phone or laptop.



Customer Care



**3-year
service
coverage**



**REMOTE
TECHNICAL
SUPPORT**



**PROBE
COVERAGE**

Conditions for additional service coverage may vary depending on your country. Please contact your Esaote representative for the conditions valid in your country. Special probes excluded. Accidental damage to probes is not covered. MyLab™X90VET standard configuration Probe Set: 4. Spare part failures due to accidental damage and peripherals are excluded. Remote Service Support requires a highspeed direct Internet connection and depends on regional availability and speed of connection.



esaote

www.esaote.com



Esaote S.p.A. - sole-shareholder company
Via Enrico Melen 77, 16152 Genova, ITALY, Tel. +39 010 6547 1, Fax +39 010 6547 275, info@esaote.com

MyLab is a trademark of Esaote spa. HyperDoppler is an Esaote advanced research tool. Technology and features are system/configuration dependent. Specifications subject to change without notice. Information might refer to products or modalities not yet approved in all countries. Product images are for illustrative purposes only. For further details, please contact your Esaote sales representative.

Please visit us online
for more information

