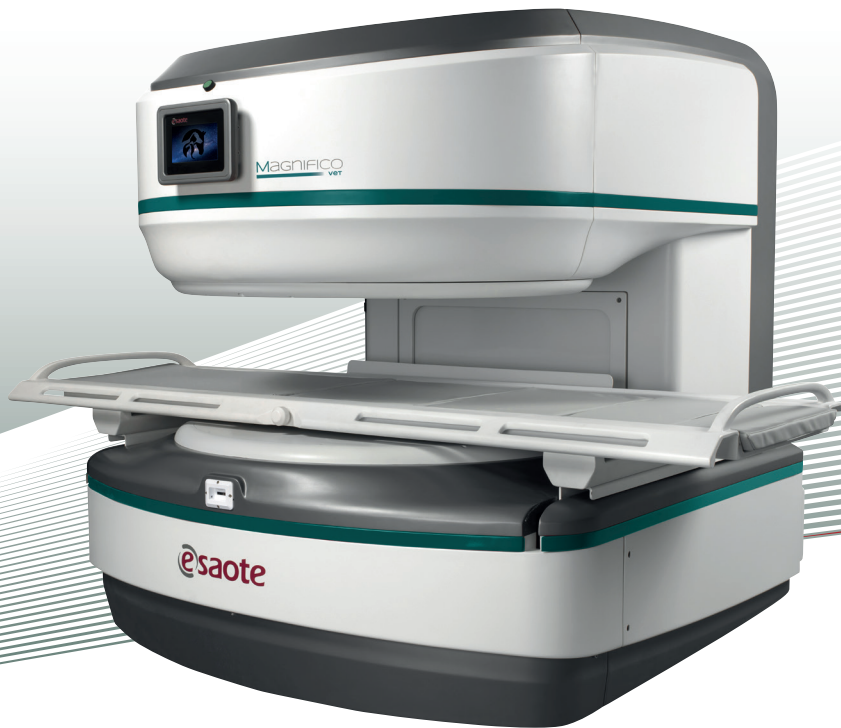


Magnifico
vet

Magnify your
Veterinary practice



NEVER STOP ELEVATING YOUR VET EXPERIENCE.



ADDING A NEW DIMENSION TO VET MRI



This is
Magnifico
vet

The next generation of veterinary MRI from Esaote

Years of experience built into the design

At Esaote, customer needs are always at the forefront of everything we do. The Magnifico Vet is a customer-driven MRI system with technology developed to better serve user needs for improved diagnostic efficacy and workflow.

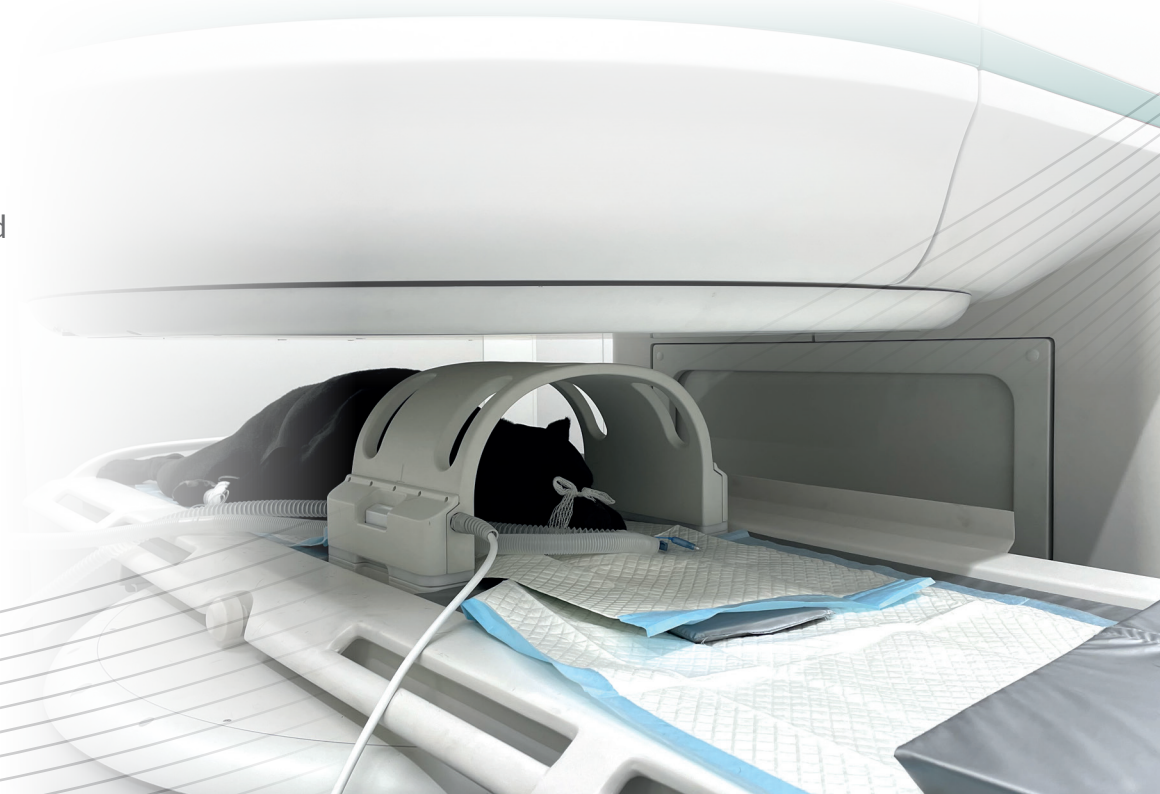
In veterinary medicine, MRI is about outcome-based services that address specific clinical needs while satisfying operational and financial demands.

Over time, advancements in MRI data acquisition have resulted in substantial improvements in image quality and reductions in scan times.

These benefits combined embody the value Magnifico Vet brings to veterinary practices. With low operating costs, no cryogens, state-of-the-art technology, and unparalleled diagnostic quality, the Magnifico Vet is the veterinary imaging solution the market has been waiting for.

Broaden your perspective

Thanks to the Esaote MRI technology, veterinarians can now broaden their perspective without compromising on image quality and workflow productivity. The Magnifico Vet open system is the right choice for veterinarians looking for new ways to expand their service offerings.



Dedicated to VET applications



Dedicated design and user interface

From the ergonomic interface and simple animal positioning to the data input and patient retrieval, scanning on an MRI has never been easier.

Vet imaging protocols that speak your language

Specific scan protocols are the key to good image quality. Magnifico Vet comes with a comprehensive library of protocols, developed with vet luminaries, dedicated to animals of diverse types and sizes.

Post-surgical imaging and microchips

The Magnifico Vet offers a special Metal Artifact Reduction (MAR) application, an optimal solution for post-surgical imaging or when microchips are present. Compared to traditional MRI, MAR sequences greatly reduce metal artifact and offer high-quality diagnostics.

Esaote, we are veterinary MRI

Over 20 years of veterinary MRI

Esaote has collaborated with private veterinary clinics and university sites for over 20 years. Feedback from our key customers allows Esaote R&D to constantly improve system performance, helping us continuously shape the future of veterinary MRI.

Your partner for training and education

Since the first international educational course in 2004, Esaote has proudly maintained its legacy and commitment to its veterinary customers. The company organizes periodic international conferences and a series of free online lectures and scientific webinars led by renowned speakers.

Esaote also offers tutorials produced in collaboration with veterinary KOLs on vet MRI scanning operations, illustrating the procedures that should be followed to scan each anatomical area.



Webinars

**Video
tutorials**

Esaote offers its customers high-quality support in veterinary MRI thanks to dedicated application specialists that understand veterinary terminology.

Educational needs may grow over time, so our vast network of MRI specialists can help you connect with like-minded veterinarians.



MRI meeting

Network

You don't need anything else

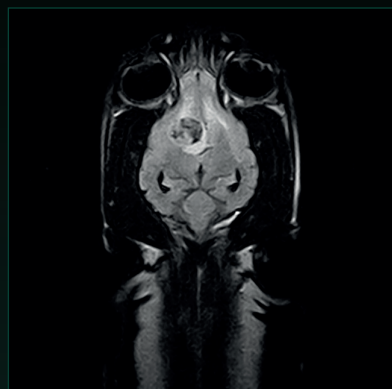
Optimized subsystem components and fast computing in combination with advanced software algorithms for data acquisition and elaboration like Speed Up technology and TR Reduction, ensures excellent and consistent quality and short scan times.



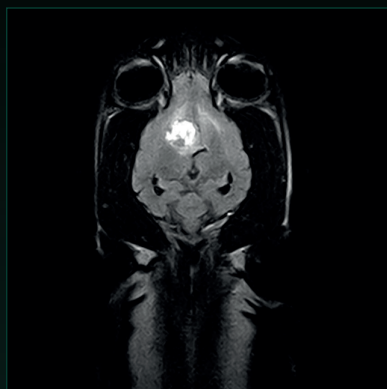
Brain
Transverse Spin Echo T1



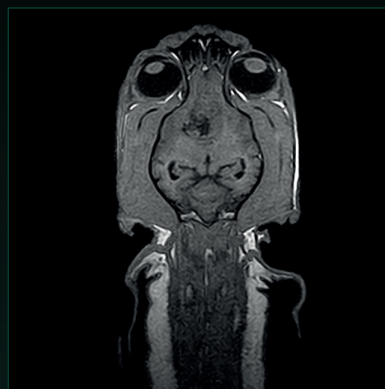
Brain Transverse Spin Echo T1
post contrast



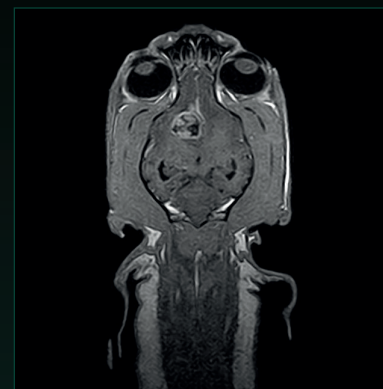
Brain
Dorsal Fast Flair



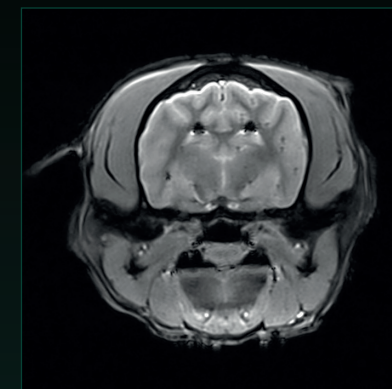
Brain
Dorsal Fast Flair post contrast



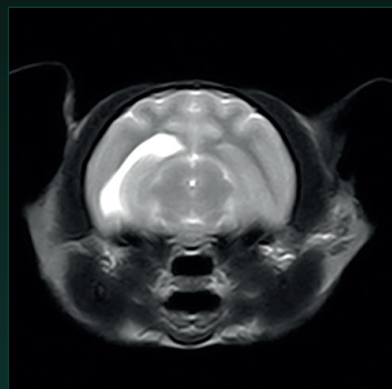
Brain
Dorsal 3D SST1



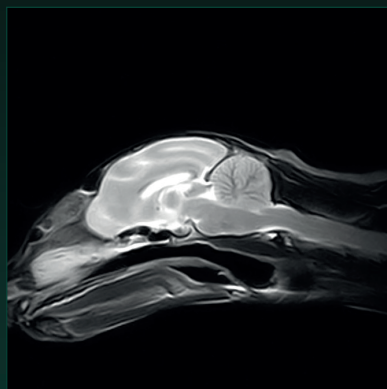
Brain
Dorsal 3D SST1 post contrast



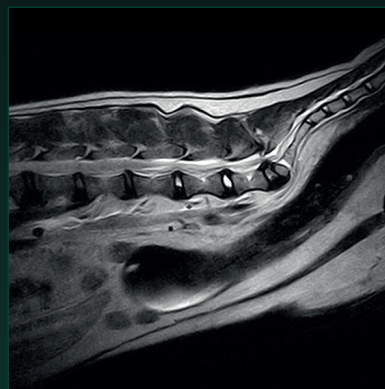
Brain
Transverse GE T2*



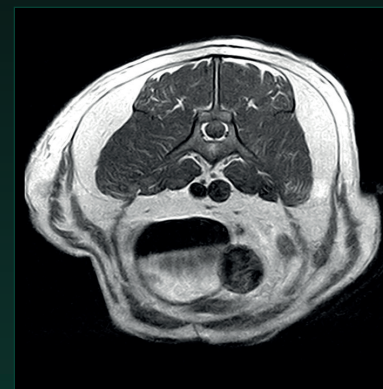
Brain
Transverse FSE T2



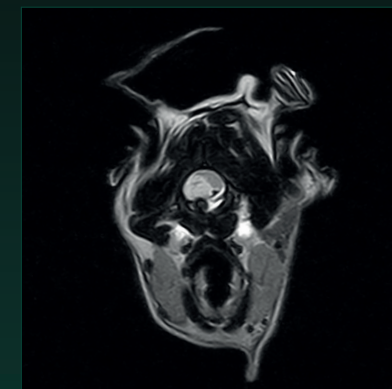
Brain
Sagittal FSE T2



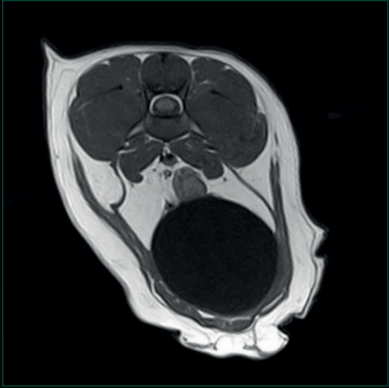
Lumbosacral Spine
Sagittal FSE T2



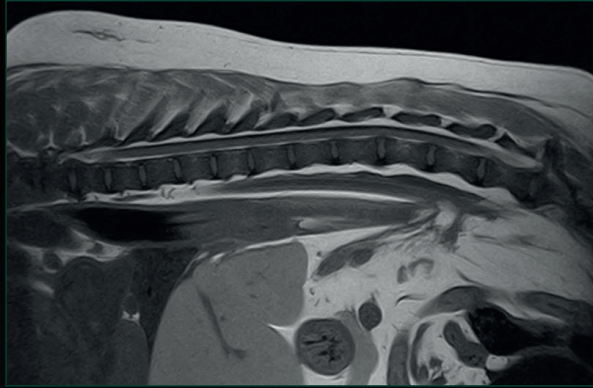
Lumbosacral Spine
Sagittal Spin Echo T1



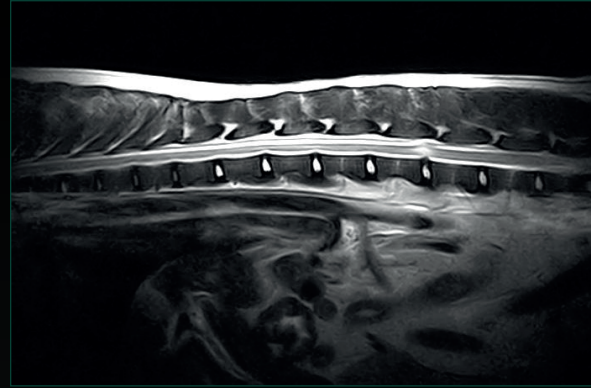
Cervical Spine
Transverse FSE T2



Lumbosacral Spine
Transverse Spin Echo T1



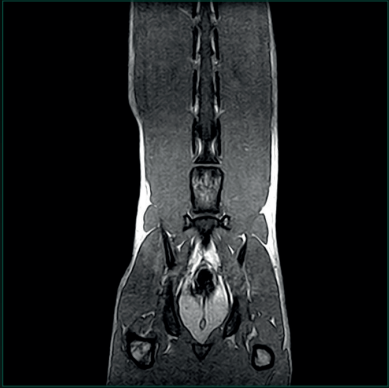
Thoracolumbar Spine
Sagittal Spin Echo T1



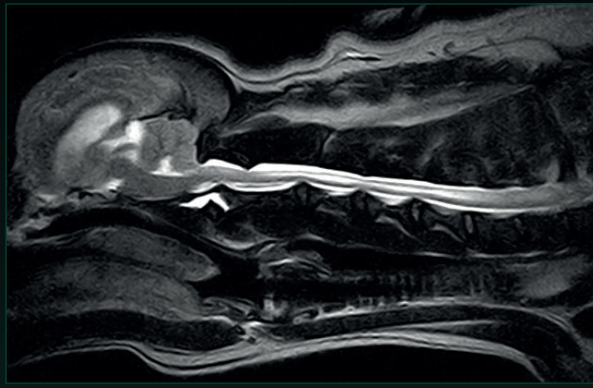
Thoracolumbar Spine
Sagittal FSE T2



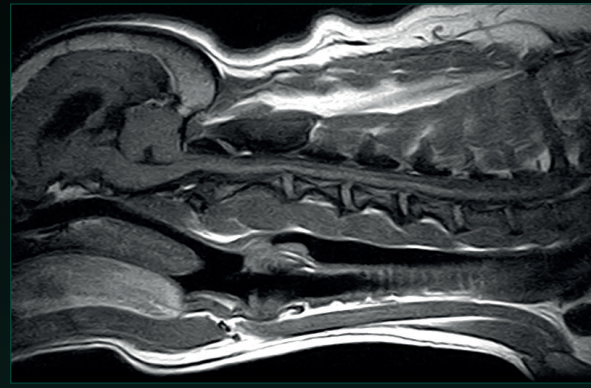
Thoracolumbar Spine
Dorsal Fast STIR



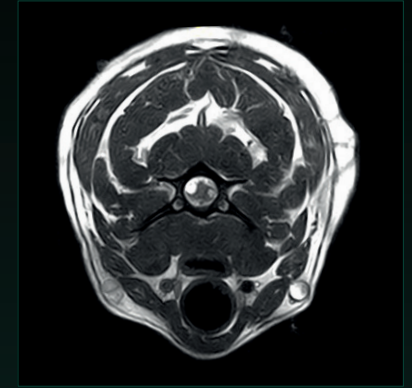
Lumbosacral Spine
Dorsal 3D SST1



Cervical Spine
Sagittal FSE T2



Cervical Spine
Sagittal Spin Echo T1



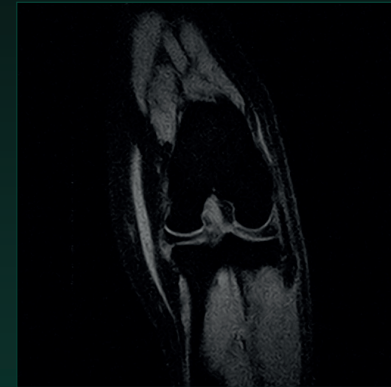
Cervical Spine
Transverse 3D Hyce



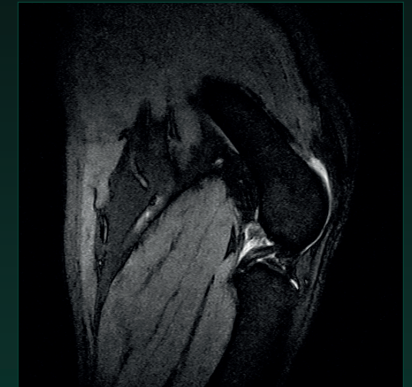
Stifle
Dorsal XBone



Stifle
Dorsal SPED



Stifle
Sagittal GE T2



Your ideas into practice

Productivity without compromise

Productivity is about ease of use, optimized scan times and patient care. Magnifico Vet covers it all.



Easy vet user interface

Esaote systems are known for being very easy to use. The Magnifico Vet is in line with this standard, offering a dedicated vet user interface focused on scanning with efficiency and the flexibility thanks to customized scans whenever needed.



Dedicated to vet MRI

The Magnifico Vet offers simplified workflow and protocol-driven scanning for fast exams and high throughput without compromising diagnostic quality. The system comes with veterinary protocols designed to speed up and simplify daily activities.



Patient care and positioning

The open structure and large patient table, in combination with the use of dedicated coils, guarantee an easy and fast positioning of animals of any size. The unique design and dimensions of the system allow the use of existing anesthesia equipment in a simplified and intuitive way.



Vet Coils



4 CHANNEL
LARGE SPINE COIL



HEAD COIL



SMALL PARTS COIL*



LARGE HEAD COIL*



DPA SPINE COIL*



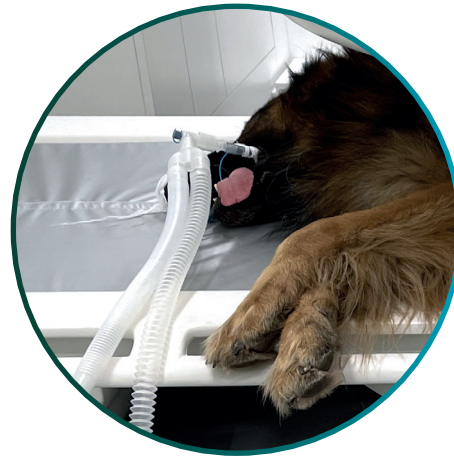
SPINE COIL



SMALL HEAD COIL

Multi Channel Coils

Ample selection of dedicated coils for an optimal result and excellent patient experience. The multichannel design allows for a high SNR, high signal homogeneity and therefore high spatial resolution.

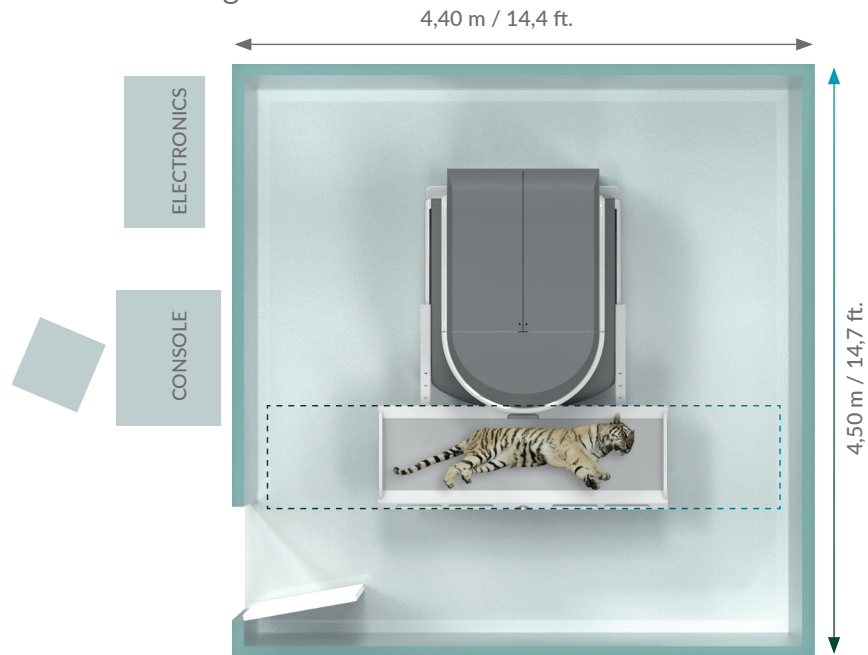


*optional

Esaote veterinary MRI, a solid investment

Magnifico Vet has been developed in line with the Esaote MRI philosophy which means quality MRI at reduced costs:

- Compact installation
- Easy operation
- Low running costs



Example of a minimal installation.
Please contact your local representative for a personalized design for your site.

Easy installation

Thanks to its smart design the magnet unit and RF shielding will fit in a space of 20 m² (212 sq.ft.).



Low running costs

- Low power consumption (maximum 3 Kw)
- No cryogenes, no water cooling
- Dedicated service contracts



Connectivity and Integration

System Life Cycle Protection

Magnifico Vet includes complete networking and storage features to work as a standalone or as part of an integrated environment.

Data security

Magnifico Vet is in line with today's requirements for data security with automatic antivirus security updates.

Standalone operation

As a standalone scanner, Magnifico Vet comprises an integrated DVD storage and retrieve software package, printer output facility and a patient-CD package.

Network operation

Magnifico Vet is DICOM and IHS compliant and offers smart solutions for connectivity to your PACS and teleradiology.

Remote service and customer care

All Esaote systems come with remote service capability. Many system parameters and system components can be checked via the remote service program specially developed for Esaote MRI systems. The remote service capability allows Esaote to react to any potential issue and to get you up and running faster!

Upgrades

Esaote MRI systems are built for the future. The long-life cycle system can keep up with technology advances to satisfy veterinary market needs, maintaining, at the same time, a low cost of ownership.



Esaote MRI

As one of the top MRI providers in the world, we commit to delivering high-quality products with unparalleled customer service.





www.esaote.com

160000410MA Ver.02



Esaote S.p.A. - sole-shareholder company
Via Enrico Meloni 77, 16152 Genova, ITALY, Tel. +39 010 6547 1, Fax +39 010 6547 275, info@esaote.com

Technology and features are system/configuration dependent. Specifications subject to change without notice.
Information might refer to products or modalities not yet approved in all countries. Product images are for illustrative purposes only.
For further details, please contact your Esaote sales representative.

Please visit us online
for more information

